



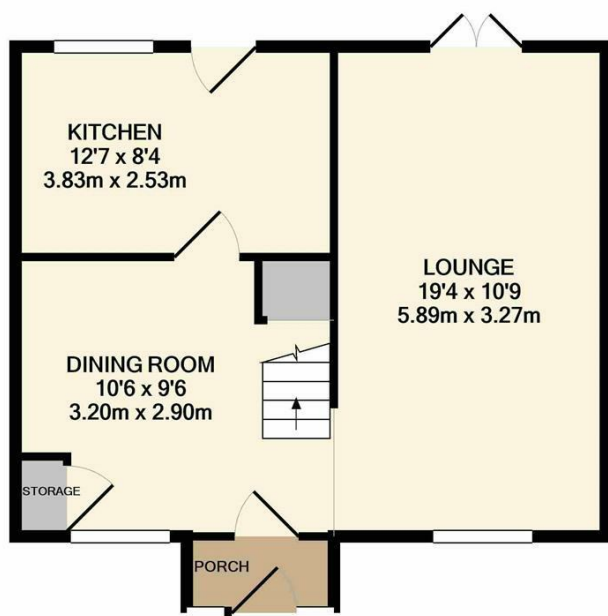
Westfield, Harlow, CM18 6AG
£1,650 Per Month

- Three Bedrooms
- Terraced Home
- Two Receptions
- Unfurnished
- Available mid/late January
- Close to Schools

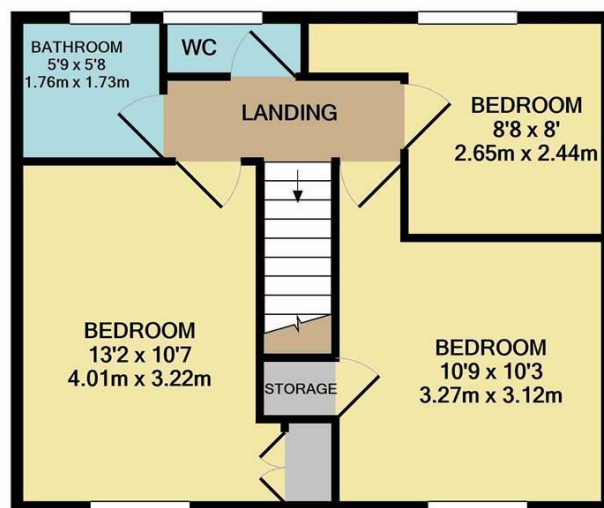
Westfield, Harlow, CM18 6AG

£1,650 Per Month

A three bedroom terraced home in a popular location, close to shops and schooling. The property is available Mid/late January 2026 on an unfurnished basis and offers good size accommodation with the ground floor consisting of an entrance porch, lounge, separate dining room and kitchen which has a range of fitted wall & base units, the first floor has three good size bedrooms and a separate bathroom & W.C. The private rear garden is laid to patio & lawn.



GROUND FLOOR
APPROX. FLOOR
AREA 468 SQ.FT.
(43.4 SQ.M.)



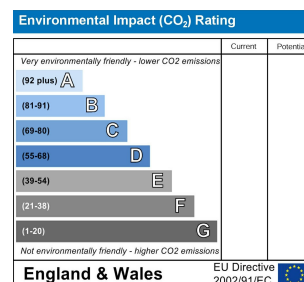
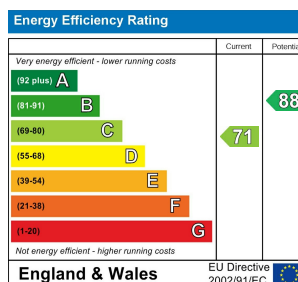
1ST FLOOR
APPROX. FLOOR
AREA 450 SQ.FT.
(41.8 SQ.M.)

REYLANDJOHNSON/WF

TOTAL APPROX. FLOOR AREA 918 SQ.FT. (85.3 SQ.M.)

Whilst every attempt has been made to ensure the accuracy of the floor plan contained here, measurements of doors, windows, rooms and any other items are approximate and no responsibility is taken for any error, omission, or mis-statement. This plan is for illustrative purposes only and should be used as such by any prospective purchaser. The services, systems and appliances shown have not been tested and no guarantee as to their operability or efficiency can be given

Made with Metropix ©2022



These particulars, whilst believed to be accurate are set out as a general outline only for guidance and do not constitute any part of an offer or contract. Intending purchasers should not rely on them as statements of representation of fact, but must satisfy themselves by inspection or otherwise as to their accuracy. No person in this firm's employment has the authority to make or give any representation or warranty in respect of the property.

T. 01279 216216

E. info@rjestateagents.co.uk

1 Acorn Mews, Harlow, Essex, CM18 6NA

www.rjestateagents.co.uk